

easy Touch pump control

The **Easy Touch** Pump Control is manufactured by Automated Electric Systems Ltd., a leader in VFD pump control since 1993. Whether upgrading an existing pump station or planning a new installation, the **Easy Touch** Pump Control is easy to install and will provide economical, efficient operation.

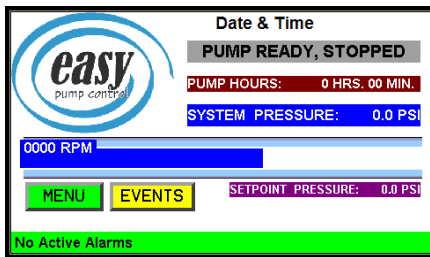
The **Easy Touch** Pump Control incorporates **Variable Frequency Drive** technology

Advantages:

- soft pump starts and smooth deceleration stops provide **Easy**, soft pump control.
- extended pump and motor life.
- Color touch screen for status information and station adjustments.
- tremendous energy savings at reduced flows.
- constant pressure at all flow rates.
- user friendly **Easy** setup.

Eliminates:

- water hammer from your system
- electric motor inrush current
- mechanical stresses to pump and plumbing.
- the need for pressure control valves
- the need for start-up or any type of cycle-stopping valves.



Standard size **Easy** Pump Control units are available for one or two pump systems. Models as shown on reverse.

Manufactured with components that are industry proven for quality. Brand names like Toshiba & Red Lion assure you that the system provides superior reliability and performance. Each panel comes with a 12 month warranty extendable to 18 months at no extra cost with a returned warranty registration.

**BUILT XTREMES
TOSHIBA**



The **Easy** pump control can be used on any style of water pump that has a three phase electric motor. By using a unique control method called Intel-Logics the unit will automatically evaluate the connected pump's performance curve. Whether you have a submersible well pump, close coupled end suction or a booster pump, the **Easy Touch** pump control will deliver excellent performance for your pumping application.



Using VFD control, pump RPM is modulated to provide the correct amount of water for any demand.

The pump will start running once a small pressure drop is sensed. Once running, the controller will adjust the pump speed to match demands placed on the system while maintaining the pressure at a constant setpoint value. Once zero flow occurs the controller decelerates the pump to a stop, ready for the next pumping cycle.



Phone: 403-328-4400 or 1-888-328-4408
Fax: 403-328-3882
www.automatedelectric.com

Easy Touch Pump Control

230 volt, single phase input

<u>Model</u>	<u>HP</u>	<u>Max. Amps</u>
<u>S2015-7</u>	<u>2</u>	<u>7.8</u>
<u>S2022-11</u>	<u>3</u>	<u>11</u>
<u>S2055-16</u>	<u>5</u>	<u>16.5</u>
<u>S2075-19</u>	<u>7.5</u>	<u>19</u>
<u>S2110-35</u>	<u>10</u>	<u>35</u>
<u>S2150-41</u>	<u>10</u>	<u>41</u>

230 volt, three phase input

<u>Model</u>	<u>HP</u>	<u>Max. Amps</u>
<u>2037-17</u>	<u>5</u>	<u>17.5</u>
<u>2055-27</u>	<u>7.5</u>	<u>27.5</u>
<u>2075-33</u>	<u>10</u>	<u>33</u>
<u>2110-54</u>	<u>15</u>	<u>54</u>
<u>2150-66</u>	<u>20</u>	<u>66</u>

460 volt, three phase input

<u>Model</u>	<u>HP</u>	<u>Max. Amps</u>
<u>4015-4</u>	<u>2</u>	<u>4.1</u>
<u>4022-5</u>	<u>3</u>	<u>5.5</u>
<u>4037-9</u>	<u>5</u>	<u>9.5</u>
<u>4055-14</u>	<u>7.5</u>	<u>14.3</u>
<u>4075-17</u>	<u>10</u>	<u>17</u>
<u>4110-27</u>	<u>15</u>	<u>27.7</u>
<u>4150-33</u>	<u>20</u>	<u>33</u>

575 volt, three phase input

<u>Model</u>	<u>HP</u>	<u>Max. Amps</u>
<u>6015-3</u>	<u>2</u>	<u>3</u>
<u>6022-4</u>	<u>3</u>	<u>4</u>
<u>6037-6</u>	<u>5</u>	<u>6</u>
<u>6055-9</u>	<u>7.5</u>	<u>9</u>
<u>6075-12</u>	<u>10</u>	<u>12</u>
<u>6110-17</u>	<u>15</u>	<u>17</u>
<u>6150-22</u>	<u>20</u>	<u>22</u>

Models numbers shown are for single pump units, add suffix "L" to include lag pump control relay or prefix "D" for two pump units. [ex: 2055-27-D; 230V, 3 Ph. 7.5HP, dual pump panel with two VFD's]

General Specifications:

Voltage supply:	Single Phase 200 - 240 vac, 3 Phase 200 - 230vac, 3 Phase 380 - 500vac, 3 phase 575V
Frequency:	50/60Hz
Tolerance:	Voltage: +10%, -15% continuous operation, Frequency +/- 5%
Control system:	Sine Wave PWM system and Inte-I-Logics micro PC.
Overload Rating:	150% FLA for 60 seconds
Frequency Setting signal:	4-20mA from included pressure sensor, face mounted speed knob for hand operation
Carrier Frequency:	Preset at 2kHz.
Accel/Decel:	Automatically adjusted for pumping demands
Retry Operation:	Preset to 3 retry attempts for non-critical faults
Protective Functions:	Overpressure, underpressure, stall protection, current limit, output short circuit, over voltage, under voltage, ground fault, output single phase, overload protection by electronic thermal setting, over heat and optional external fault circuit.
Power Failure:	Auto reset after power failure
Touch Screen:	Full colour touch screen for system information & station adjustments.
Installation:	Indoor, 3300 feet altitude (without derating), protect from corrosive & explosive gases
Ambient:	Temperature: 0 to 40 degrees C, 32 to 104 degrees F, Humidity: 95% non-condensating.
Pressure setting:	Range: 40 - 100PSI, adjustable on touch screen HMI.
Dimensions:	Enclosure: Model x075 and less: 20x16x10 in. Models x110 & x150: 24x20x10 in.
Approval:	Canadian Standards Association (CSA), as industrial motor control assemblies.

Notes:

-- **Select Easy Pump Control model based on Maximum Amp capacity for the pump's electric motor full load current rating, not horse power rating.**

-- Standard pressure setting range is adjustable from 40-100 PSI, custom ranges available at no extra charge when specified at time of order.

-- Load reactors may be required where long cable lengths exist from the controller to the pump motor.
 [230V > 1,200 ft.] [460V > 400 ft.] [575V > 120 ft.]

-- Specifications subject to change, manufacturer reserves the right for product alterations and/or improvements.